

**For Lease
Quality Office Space**

**2468 NE Division Gresham
Plaza 2400 Office Condos**

Fully renovated, ready to move-in.

Four offices, one large enough to use as conference or meeting room.

Fully equipped kitchen, even includes coffee-maker.

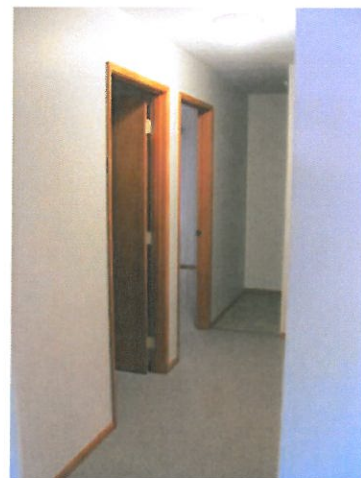
Ample storage, cabinets and shelving.

Good natural light. 2 sliders open to patio areas.

Alarm and Comcast served.

Air conditioned; excellent parking; space provided on entry sign.

\$1,500 per month plus gas & electricity.
Minimum 3 year term



Sue O'Halloran

503-661-8000

Kohler Meyers O'Halloran, Inc.

WWW.KMOREALESTATE.COM

15 NE 3rd St.

Gresham, OR 97030

KMO
KOHLERMEYERSO'HALLORAN, INC.