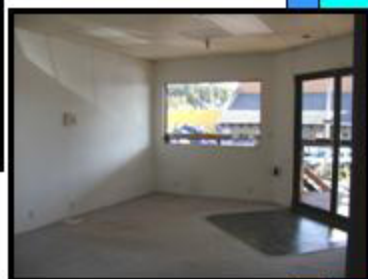




For Lease

39084 Proctor Blvd Suite C., Sandy Oregon 97055



Wheatland Building

- Approximately 2102 Square Feet of Second Floor Office Space
- Fully Sprinklered
- Stairway Access to Proctor
- Fronts on Central Parking Area Between Proctor and Pioneer
- In the Heart of Historic Downtown Sandy
- Close to Business Services, Restaurants, and Clackamas County Bank
- \$950.00 per Month Plus Gas and Electric
- Tenant Improvements Negotiable Depending on Term and Credit

Contact: Darren OHalloran, CRS; Martin Stone, CCIM
(503) 661-8000 Fax (503) 661-7400

www.KMO-Real-Estate.com

Email: Martin@KMO-Real-Estate.com; Darren@KMO-Real-Estate.com

KMO
KONLER METZES O'HALLORAN, INC.