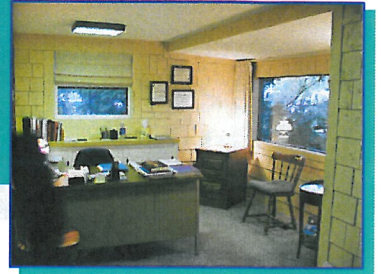




For Sale or Lease



Great Owner/User Opportunity

1410 E Powell Gresham, OR 97080

Price Reduced to \$375,000

- 1521 Square Feet Office Space with 600 Square Foot Storage Building
- Lot Size: 15,275 Square Feet
- Prime Location on High East /West Traffic Corridor
- Buildings are Well Maintained with Strong Street Appeal
- Currently Used for Photographic Studio, Exceptional Grounds
- Room For Additional Development on Rear of Lot
- Property Zoned DCL (Downtown Mixed-use Commercial Low-rise Commercial) Allows Wide Variety of Uses
- Close to Historic Downtown and Business Amenities and Restaurants
- Forced Air Gas Furnace with Central Air Conditioning
- Starting Lease Rate \$1500.00 per month plus Utilities

Contact: Sue O'Halloran , CRS; Martin Stone, CCIM

(503) 661-8000

Fax (503) 661-7400

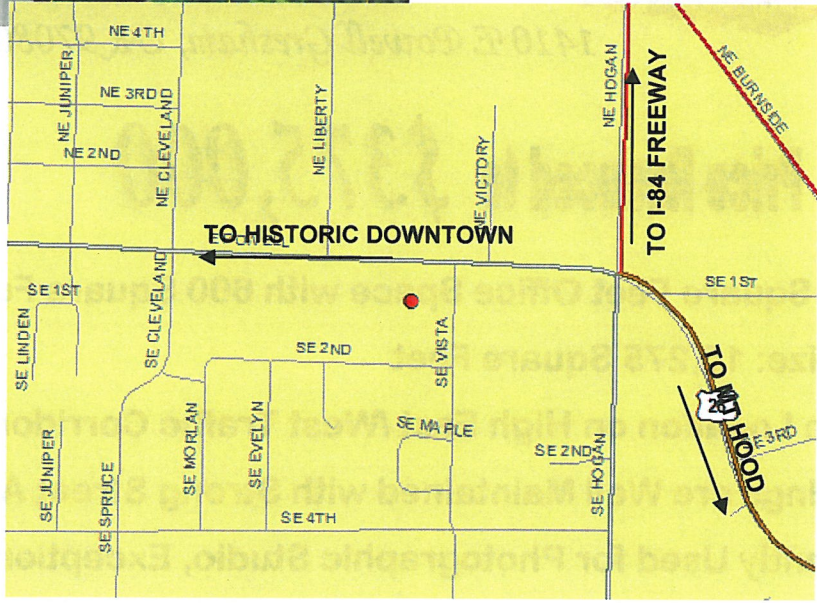
www.KMO-Real-Estate.com

Email: Martin@KMO-Real-Estate.com; Sue@KMO-Real-Estate.com

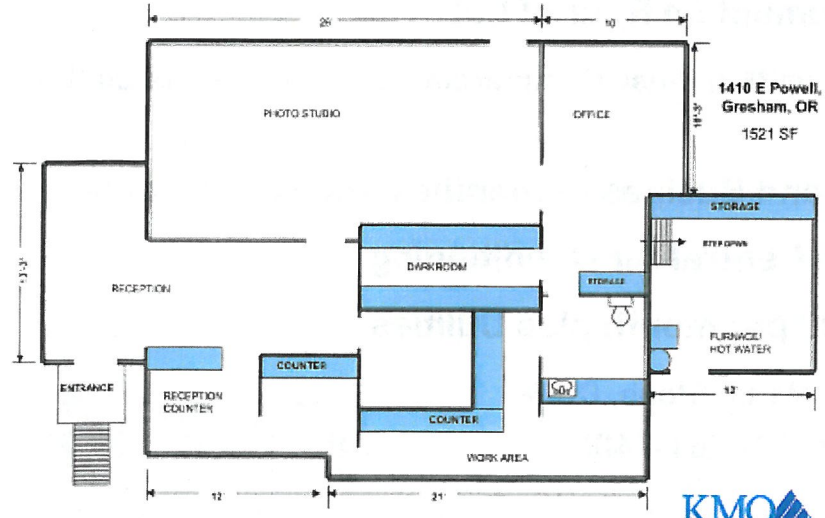
KMO
KOHLMeyersO'HALLORAN, INC.



SITE



LOCATION



SPACE PLAN

