



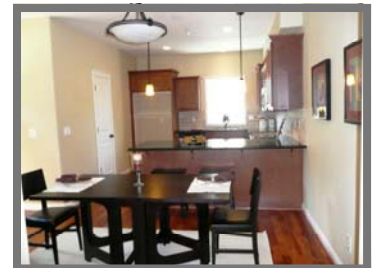
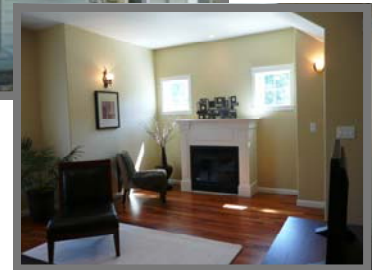
Priced from  
**\$249,900 to \$271,900!!!**



## “B” Style

308, 316, 328, 334, 352, 358 SW Eastman Parkway

- 3 Bedrooms, 2 1/2 Bathrooms
  - 1632 -1668 Square Feet
  - Elevator Option Available
    - Single Car Garage
- Slab Granite Countertops in Kitchens & Bathrooms
- “Energy Star” Rated—90% efficient Carrier gas furnace; electric water heater; windows; appliances; air-sealed to ensure draft stop; 50% of light bulbs used are Energy Star; insulation is 15% superior to code
  - Gas Range & Gas Fireplace
- Sun Tunnels; Quality built-ins; Ample Storage; Phone & Cable Outlets in all Bdrms; Wired for FiOS; Plumbed for A/C; Fully Sprinklered
  - HOA Dues—\$222/month



**HOA DUES PAID FOR FIRST YEAR W/ ACCEPTED OFFER!!!**

Information deemed reliable, not guaranteed and subject to change



Kerry Ann O'Halloran 503.475.3703  
Corinne O'Halloran 503.819.2337  
Office Phone 503.661.8000

KOHLER MEYERS O'HALLORAN, INC.  
15 NE 3<sup>rd</sup> Street Gresham OR 97030 503.661.8000

[springwatercondominiums.com](http://springwatercondominiums.com)